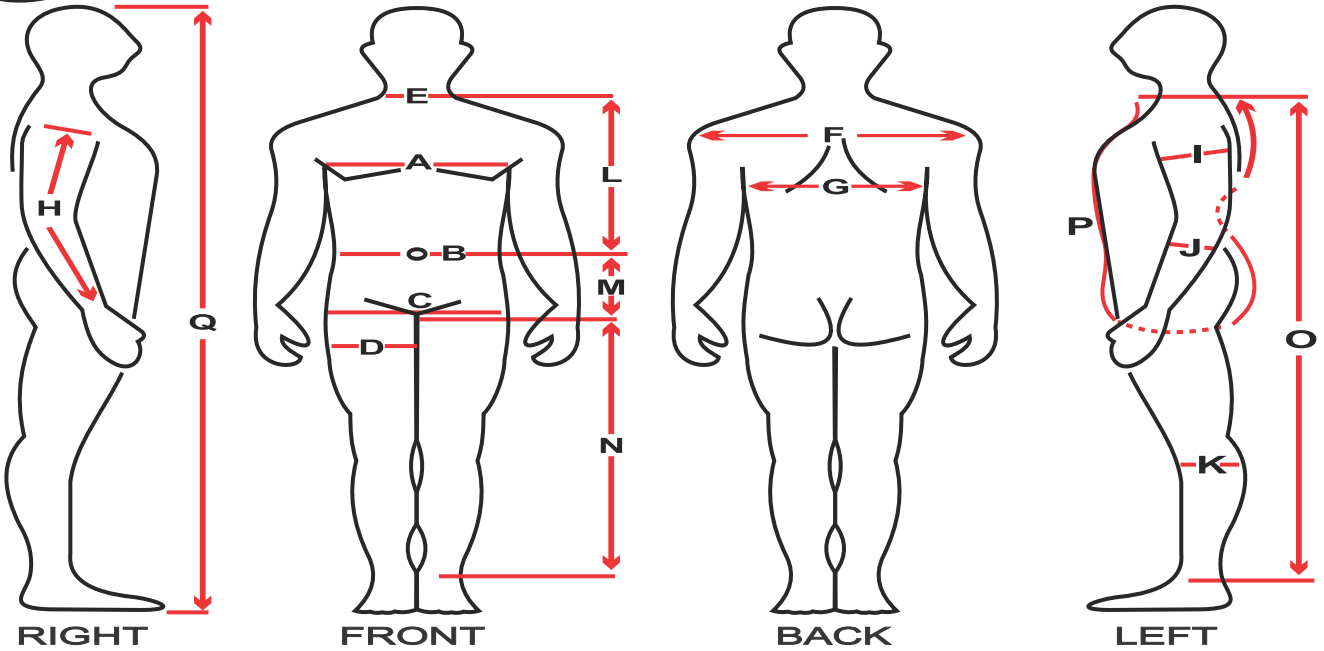




CUSTOM MEASUREMENT FORM



- A** _____ **Chest Circumference** Measure below the armpits
- B** _____ **Wasit Circumference** Measure at belly button height
- C** _____ **Hip Circumference** Measure around the widest part
- D** _____ **Thigh Circumference** Bend on one knee and measure
- E** _____ **Neck Circumference** Measure at the base of the neck
- F** _____ **Width Across Shoulders** Measure from edge to edge
- G** _____ **Width of Back** Measure from armpit to armpit
- H** _____ **Sleeve Length** Measure from shoulder edge to wrist
- I** _____ **Bicep Circumference** Flex your arm and measure
- J** _____ **Forearm Circumference** Measure the widest part
- K** _____ **Calf Circumference** Measure the widest part
- L** _____ **Torso Length 1** Base of neck to belly button
- M** _____ **Torso Length 2** Belly button to right below the crotch
- N** _____ **Inseam** From right below the crotch to ankle
- O** _____ **Total Suit Length** From shoulder to ankle
- P** _____ **Saddle Measurement** From base of neck to under your torso to your necks base at back
- Q** _____ **Total Height** Measure from top of head to all the way down
- .** _____ **Total Weight** Mention the units

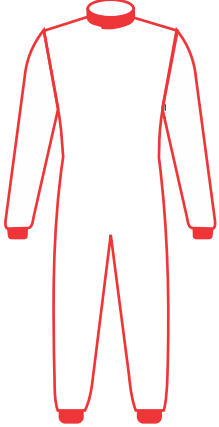
DRIVER NAME

IMPORTANT INSTRUCTIONS

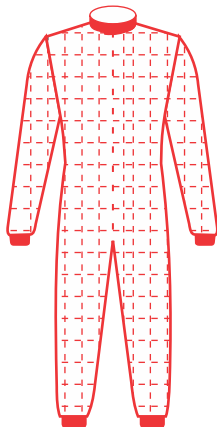
- Use cloth Tape close to skin – take exact measurements only.
- Inches are preferred for accurate measurements.
- Wear form-fitting clothes (underwear recommended)

STITCHING STYLES

NO STITCH
(Single Layer Only)



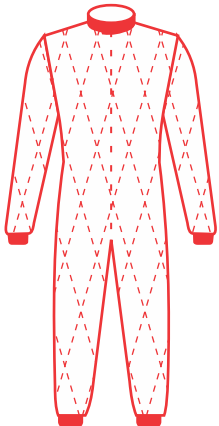
BOX STITCH



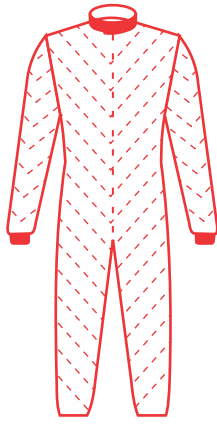
CROSS STITCH



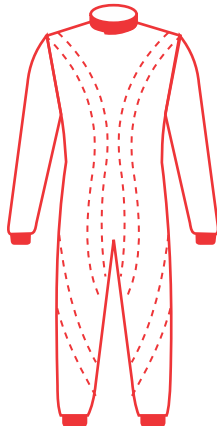
DIAMOND STITCH



DIAGONAL STITCH



CUSTOM STITCH



COLLAR STYLES



BANDED V WITH VELCRO



LARGE WITH VELCRO



TAPERED V



ADD ONS

Arm Restraints (D-Rings) \$15 USD

Receiver Pocket \$08 USD

Elbow Panel \$15 USD

Side Panel \$25 USD

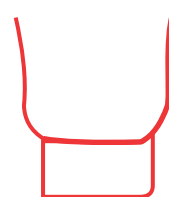
Knees Panel \$15 USD

Arms Seam \$20 USD

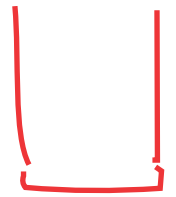
Legs Seam \$15 USD

Crotch Panel \$15 USD

LEG CUFF STYLE



EURO CUT



BOOT CUT

